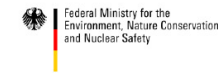




Empowered lives.  
Resilient nations.



## MONTHLY ROUND UP – JANUARY 2014

### PROGRAMME AND PROJECT HIGHLIGHTS

#### Global Good Practice Analysis Underway through the International Partnership on Mitigation and MRV in collaboration with the LECB

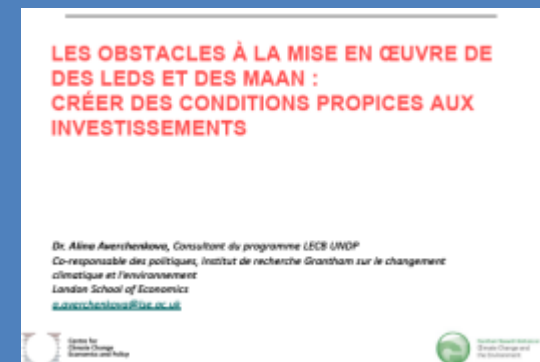
In an effort to increase mitigation ambition among countries and contribute to enhanced action in the field of LEDS/NAMA development, we are happy to announce the LECB Programme Global Support Unit has partnered with the [International Partnership on Mitigation and MRV](#) to carry out a [Global Good Practice Analysis](#).

Officially started in 2013 the Partnership and the LECB, in conjunction with Ecofys, spent the preceding months developing comprehensive criteria for what constitutes a 'good practice' and conducting a preliminary mapping of national activities underway. This stocktaking has resulted in a list of 21 good practice examples that will be analysed for their success factors, lessons learned and barriers addressed, ultimately resulting in case studies to be used as knowledge products and disseminated through the Partnership and the LECB Global Support Unit.

The Global Good Practice Analysis will include LECB Initiatives such as approaches to gender considerations and the application of a Rapid Gender Assessment tool in **Bhutan**, the NAMA Prioritisation Process currently employed in **Lebanon**, and the Carbon Management Programme to quantify and monitor GHG emissions underway in **Chile**, to name a few.



*Aviser...*



The popular “Barriers to LEDS and NAMA Investment” presentation originally delivered by Dr. Alina Averchenkova has been translated into [French](#).

The Partnership, the LECB Global Support Unit and Ecofys hope to share findings in June. Stay tuned for more information!

## LECB NAMA Net Launch, New York, NY - 26-28 February 2014



In 2013 the LECB Global Support Unit engaged in a complex procurement exercise to develop a sophisticated network of NAMA experts to provide targeted support to participating LECB countries. This process has resulted in the formation of **LECB NAMA Net** – a consortium of thematic experts that have been selected to provide critical backstopping to LECB country teams in order to ensure mature NAMA proposals that will address national needs while also satisfying funding and implementation requirements of the investor community.

During the last week of February representatives from the seven selected firms, along with Project Coordinators from each of the 25 LECB countries will come together in New York for the formal launch of the **LECB NAMA Net** component, and more importantly to discuss in person the needs and support that will be provided under this backstopping initiative. This meeting will also be an opportunity to evaluate synergies and identify good practices that may be able to be applied more universally.

**LECB NAMA Net** is a result of a generous contribution from the European Commission in direct response to countries reporting significant challenges in undertaking an array of decisions involved in designing NAMAs that are technically sound and financially feasible. **LECB NAMA Net** will focus on three key areas of NAMA design: scenarios & decision-making tools, finance, and MRV. In doing so, **LECB NAMA-Net** aims to bridge the gap between the original LECB Programme outputs, which are mostly focused on concept design capabilities, and the financial and technical diligence of mature NAMA proposals that are seeking to attract domestic and international sources of funding.

More information will be provided after the official launch,

26-28 February 2014.

## Comprehensive GHG Inventory Training Carried out in Kenya



Last in a series of workshops and working session the LECB Project in **Kenya**, 20-25 January facilitated a workshop with the primary objectives of:

- I. Training sector level teams on uncertainty assessment for the respective UNFCCC GHG inventory sectors, and on procedures for documentation of the inventory data at the national level;
- II. Creating a understanding of the need for a robust Archiving System, procedures for selecting national activity data and emission factors, and related parameters (units, source, year of data, etc. ) used in the inventory preparation process for selected key sectors;
- III. Developing specific data archiving procedures, and finalizing institutional roles and arrangements, along with developing an archiving plan;
- IV. Training the sector level teams to carry out uncertainty assessments for the respective UNFCCC GHG inventory sectors, and on procedures for verification and documentation of the inventory data at the national level;
- V. Developing and implementing a QA/QC system for the National GHG Inventory; and
- VI. Carrying out estimations of GHG Emission/Removals in the inventory preparation process for selected key categories in all the sectors including data compilation, documentation of appropriate methods and emission factors, estimating and calculating anthropogenic GHG emissions by sources and removals by sinks using the data collected by each sector.

The five day workshop brought together key stakeholders

### LECB FACTSHEET IN FRENCH!

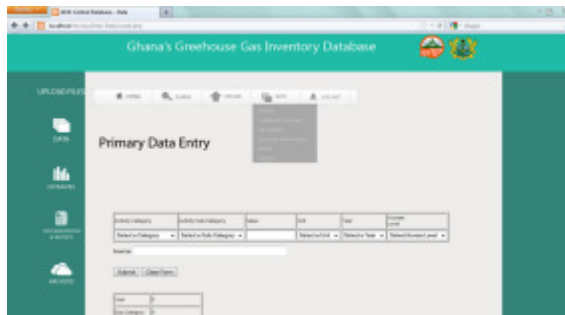


TO DOWNLOAD CLICK [HERE](#).  
A SPANISH FACTSHEET WILL BE AVAILABLE SHORTLY

from the sectors of Energy, Waste, Industry Processes and Product Use (IPPU), and Agriculture, Forestry and other Land Use (AFOLU), thereby strengthening stakeholder engagement and connections. The workshop included extensive preparation activities and resulted in an agreement of responsibility of tasks. These activities – preparation, training, ownership of task – further support the outcome of more sustainable GHG Inventory System in **Kenya**. As a next step participants agreed on a way forward which involves developing an inventory improvement strategy per sector, thus contributing to a more robust and institutionalized GHG Inventory System.

The full [workshop report](#) can be accessed on the LECB Website [country page for Kenya](#).

## Workshops on Sustainable GHG Data Management and Establishment of MRV Data Sharing Network in Ghana



Through discussion-based and hands-on approaches, the LECB team in **Ghana** conducted back-to-back workshops on sustainable GHG Data Management and Establishment of MRV Data Sharing, at the end of 2013. The LECB Project in **Ghana**, among other activities, supports the roll out of the CARP, or the Climate Ambitious Reporting Programme which provides a framework for coordinating all climate related reporting efforts in **Ghana**. The back-to-back workshops included 70 participants from 30 different institutions and resulted in:

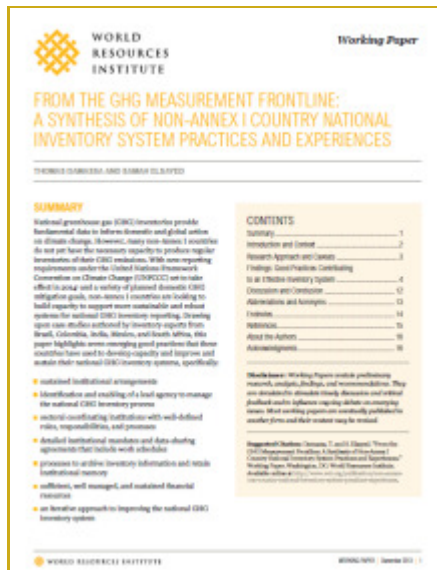
- Functional institutional arrangements for the domestic MRV;
- A list of existing mechanisms for collecting and tracking data on implementation of mitigation actions and support;
- A list of possible mitigation actions elicited from the sectors;
- Practical discussions and hands on exercises used to train participants on the table format

for reporting “mitigation actions” and “support” based on the CGE training materials; and

- A completed GHG data improvement strategy template for the five inventory sectors.

The LECB team in **Ghana** summarized the objectives, activities, and outcomes of the workshops in an easy to read Workshop Report which may prove useful for other LECB colleagues embarking on this work. The full report can be downloaded from the LECB Programme website on the [Ghana country page](#) or [here](#).

## From the GHG Measurement Frontline: A Synthesis of Non-Annex I Country National Inventory System Practices and Experiences



The [World Resources Institute](#) recently published a working paper on national GHG inventories through the [Measurement and Performance Tracking \(MAPT\) Project](#) entitled “**From the GHG Measurement Frontline: A Synthesis of Non-Annex I Country National Inventory System Practices and Experiences.**” The LECB Global Support Unit and UNDP colleagues acted as contributors. The full paper can be downloaded [here](#).

Drawing upon case studies authored by inventory experts from Brazil, Colombia, India, Mexico, and South Africa, this paper highlights seven emerging good practices that these countries have used to develop capacity and improve and sustain their national GHG inventory systems, specifically:

- sustained institutional arrangements
- identification and enabling of a lead agency to manage the national GHG inventory process
- sectoral coordinating institutions with well-defined roles, responsibilities, and processes
- detailed institutional mandates and data-sharing agreements that include work schedules
- processes to archive inventory information and retain institutional memory
- sufficient, well managed, and sustained financial

✉ [lowemission@undp.org](mailto:lowemission@undp.org)  
 🖨️ [www.lowemissiondevelopment.org](http://www.lowemissiondevelopment.org)  
 📁 <https://undp.unteamworks.org/node/21257>  
 📞 +1.212.906.6905

resources

- an iterative approach to improving the national GHG inventory system

It is our hope that the sharing of the experiences and lessons learned described here may help other non-Annex I countries grappling with national GHG inventory management concerns and capacity constraints.

Note: individual case studies upon which this paper is based, as well as additional case studies that are part of the MAPT national GHG inventory case study series, are available for free at

<https://sites.google.com/site/maptpartnerresearch/national-ghg-inventory-casestudy-series>

*To contribute to future editions of the Monthly Round Up please write to: [lowemission@undp.org](mailto:lowemission@undp.org)*